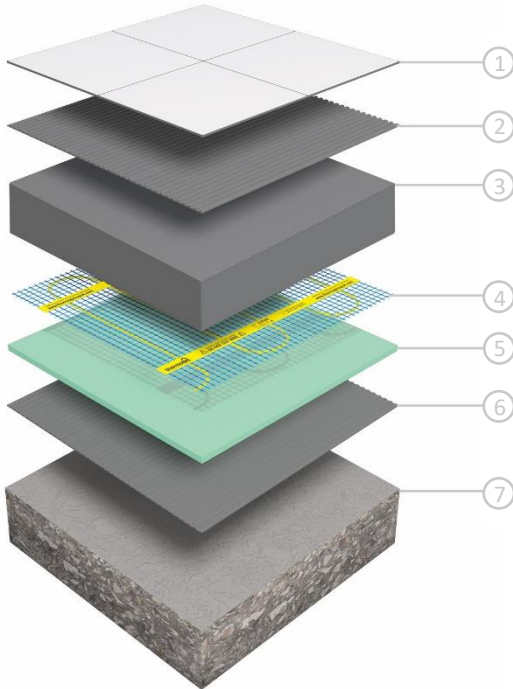


# Thermonet 200W/m<sup>2</sup> T Kits

For Installation In Screed Up To 50mm Thick



1. Tiled floor finish
2. Flexible tile adhesive
3. Sand & cement screed
4. Thermonet 200W/m<sup>2</sup> heating mat
5. Econoboard uncoated insulation board
6. Flexible tile adhesive
7. Concrete substrate



**Lifetime Warranty**

We are so confident of the quality of our German-made Thermonet Underfloor Heating that we give each system a warranty that lasts a Lifetime with 3 year warranty on our Thermostats.



**In Screed heating**

Suitable for installation in screeds of 20mm to 50mm, and is recommended to be fixed to insulation boards.



**TwistedTwin cable on full self adhesive mesh**

The unique stress free cable construction creates a longer lasting heating cable with zero electromagnetic field (Zero EMF). The self adhesive mesh speeds up installation by holding Thermonet matting to the substrate for easy self levelling and tile fixing.



**Ideal for areas with limited floor space**

Thermonet 200Watt mats are ideal for rooms with limited floor space for the heating mat. The 200Watt ensures a high heat output across the floor warming the entire room.



**Perfect for high heat loss applications**

The high heat output of the 200Watt mats makes them perfect for rooms which are prone to high heat loss. This can be further reduced by adding a layer of insulation below the heating.

## Technical Data



**Kit Includes:** Thermonet 200W/m<sup>2</sup> Mat, Programmable Thermostat (5220A), Floor Temperature Sensor, Sensor Conduit, Fixing Tape, Cable Monitor, Installation Guide & Warranty Form.

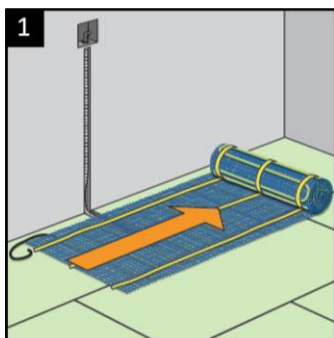
Width	500mm
Heated Width	430mm
Thickness	3.5mm
Max. Temperature	28°C *
Protection Rating	IP68
Warranty	Lifetime on heating mat
Wattage	200W/m <sup>2</sup>
Conductor Type	Singe Ended
Cold Tail Length	5m

\*Regulated by floor sensing thermostat

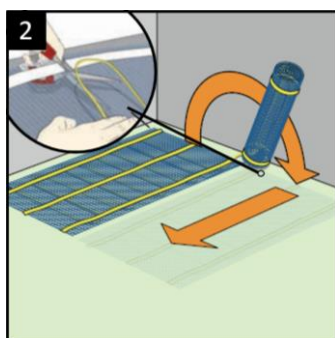


### Installation Overview

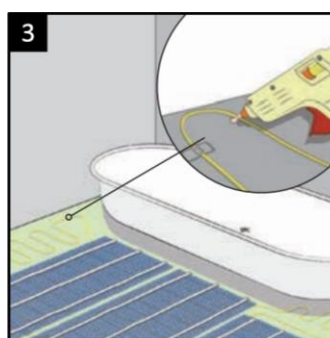
Thermonet electric underfloor heating mat is quick and easy to install. This overview gives a guide to the basics. Always read the instructions in full before attempting your own installation.



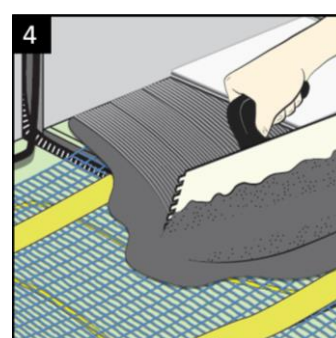
**1 Roll out the mesh**  
The mesh should be laid wire side down



**2 Cut the mesh (not the cable)**  
Turn the mesh 180° and continue rolling



**3 Loose run for irregular areas**  
Remove the cable from the mesh, arrange and stick down



**4 Screed & Tile**  
Lay your screed and then tile on top of the screed layer

This is an illustrative guide only. Read the instruction manual that is supplied with the system in full before attempting installation.

### Thermonet Mesh 200W/m<sup>2</sup> T Kits

Stock Code	Size (m)	Area (m <sup>2</sup> )	Output (W)	Resistance (Ω)
112002T	2 x 0.5	1.0	200	265
112003T	3 x 0.5	1.5	300	176
112004T	4 x 0.5	2.0	400	132
112005T	5 x 0.5	2.5	500	106
112006T	6 x 0.5	3.0	600	88
112007T	7 x 0.5	3.5	700	76
112008T	8 x 0.5	4.0	800	66
112009T	9 x 0.5	4.5	900	59
112010T	10 x 0.5	5.0	1000	53
112012T	12 x 0.5	6.0	1200	44
112014T	14 x 0.5	7.0	1400	38
112016T	16 x 0.5	8.0	1600	33
112018T	18 x 0.5	9.0	1800	29
112020T	20 x 0.5	10.0	2000	26
112024T	24 x 0.5	12.0	2400	22